

## TECHNOFORM

Thermal edge bond solutions  
for insulating glass

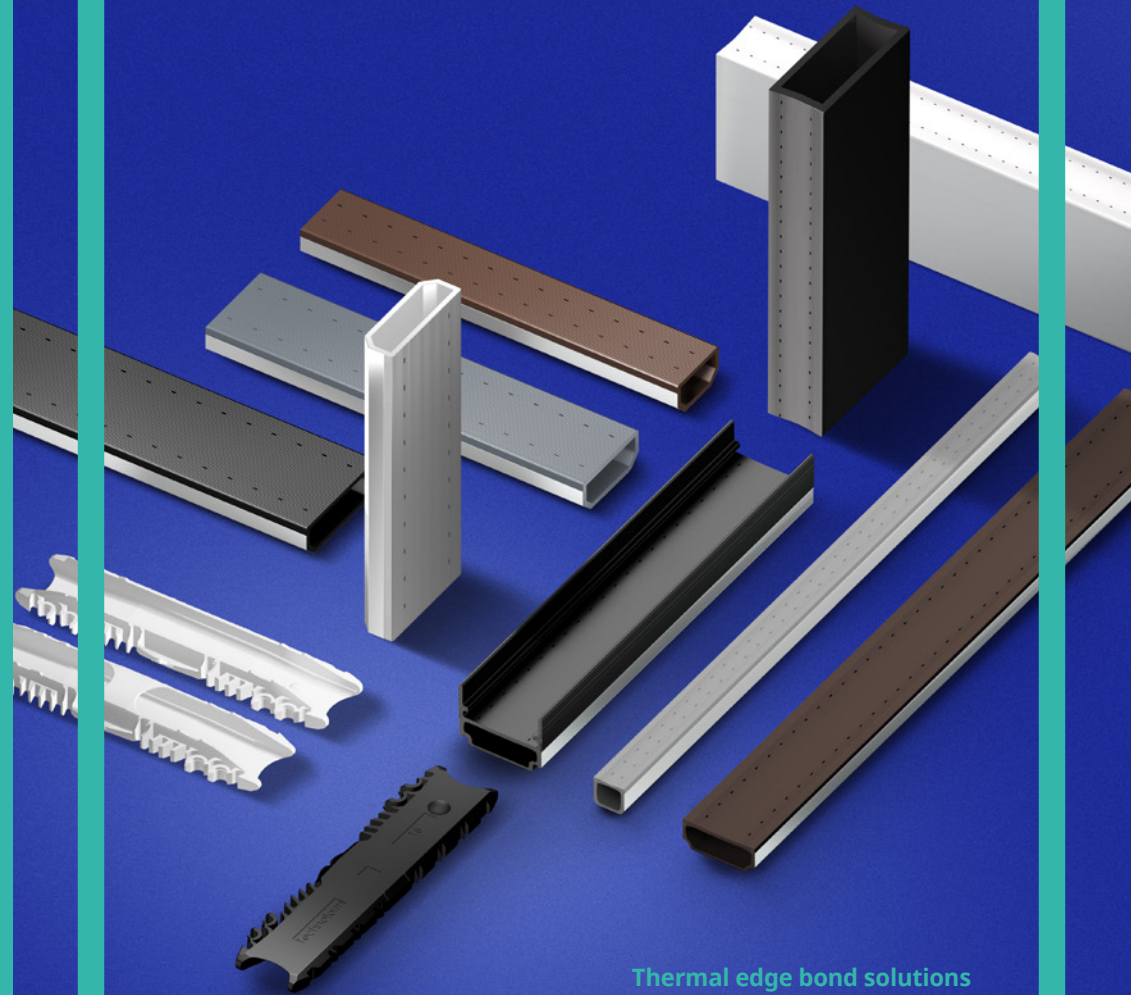
[info.oesde@technoform.com](mailto:info.oesde@technoform.com)  
[www.technoform.com](http://www.technoform.com)

Version 1.1 | March 2022

TECHNOFORM

# The excellent connection

Our solutions for the ideal frame closure



Thermal edge bond solutions  
for insulating glass

## Hello, we are Technoform!

As a family company, we know that people empower every business. We firmly believe that the best ideas are always born together. We are Technoform – 1,500 and growing, dedicated innovators that work for our customers worldwide.

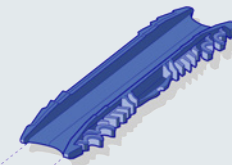
Understanding what drives customers and markets since 1969, we develop leading solutions collaboratively. Providing 100% reliability and quality on all levels, we offer the same level of high-quality services and solutions all around the world. 45 sites in over 40 countries ensure continuous supply wherever you are.

Performing 360° precision and 1,000+ skills, our highly trained team turns individual needs into tailored technological solutions. Delivering quantities from 1 to 1,000,000 our customers can rely on receiving the best available package of quality, quantity, time, and value.

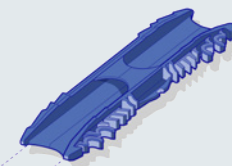
## Customized for the insulating glass edge bond

Within the glass edge bond, a functional secure frame has a significant impact on the performance of the entire glass edge bond system. As your partner for durable, thermally optimized solutions for the glass edge bond, we have invested our competency and experience in developing our new Technoform connector.

The result – high-quality connectors in two different designs that are ideally suited to manual and automated processing and perfectly matching our spacer geometry. In this way, we ensure the best composition of all components in the glass edge bond.



**CN53**



**CN54**

### **Your benefits:**

- Improved quality and durability of the insulating glass unit
- Process reliability
- Dimensional stability at the connection points, even for larger frames
- Prevention of gap formation and avoidance of desiccant leakage
- No deformation of the spacer geometry
- Reliable molecular sieving due to asymmetry and special inlet ramp
- Larger interior cross section for a reduced flow resistance
- Guaranteed barrier for gas and moisture diffusion
- Simple and easy handling

- Available in two variants, with and without bridge
- Colors: black and grey
- Suitable for manual and automated processing
- Pre-inserted standard solution for our warm edge spacers (SP13/SP14)
- Available in boxes of 5,000