

# Handling instructions

Usage of Technoform Pallet  
P-20, P-21, P-22, P-60

Insulating profiles  
for windows, doors  
and facades.

## Disclaimer



Improper operation or use of pallets for activities different from which they were designed for, can be dangerous or deadly for the user and/or for other stakeholders. It could also cause damages to the stillages or other objects nearby.

Technoform BAUTEC is not liable for damages resulting from such misuse. The operator alone assumes all responsibility.



Each company has to draw up their own operating instructions for their own employees and, these operating instructions must be communicated to them clearly.

Each person who is involved in the use of Technoform' Stillages is obliged to read and understand these instructions.



Possible hazards could result from excessively high stacking of stillages which are not correctly mounted or interlocked and due to the use of damaged, bent or broken stillages.

Transportation on site by fork-lift trucks may be dangerous in case of excessive speed, especially near work areas, corners and blind spots.

Other sources of danger may be incorrect loading, overloading of fork lift trucks, limited visibility or overly narrow traffic areas.

## Introduction

The present document provides all the necessary information for the handling of pallet used by Technoform to deliver their products.

Pallets are categorized by alphanumeric codes:

- pallet Technoform P-20
- pallet Technoform P-21
- pallet Technoform P-22
- pallet Technoform P-60

The different types of pallets are illustrated in the pictures below:



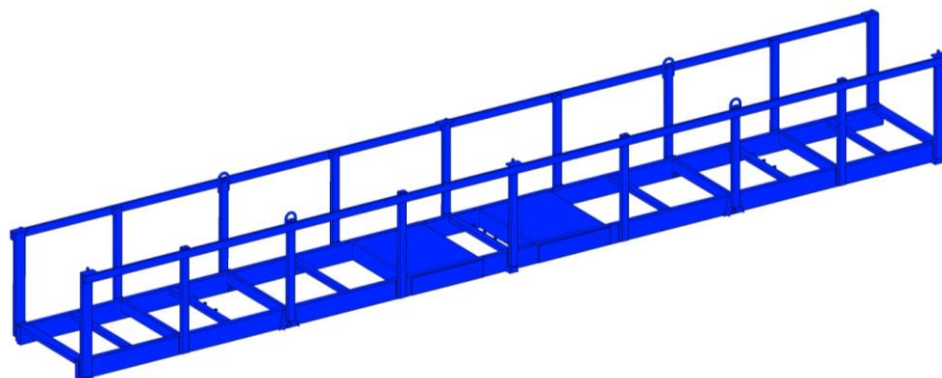
1 Pallet P-20



2 Pallet P-21



3 Pallet P-22



4 Pallet P-60

## General information

### Pallet dimensions

Pallet Type	Length [mm]	Width [mm]	Height [mm]
Pallet P-20	5980	740	740
Pallet P-21	5980	740	740
Pallet P-22	6480	740	740
Pallet P-60	5980	796	685

### Maximum loads

Pallet Type	Pallet weight (Unladen Weight)	Maximum load per pallet (net weight)
Pallet P-20	140 kg	1500 kg
Pallet P-21	160 kg	1500 kg
Pallet P-22	175 kg	1500 kg
Pallet P-60	236 Kg	1700 Kg

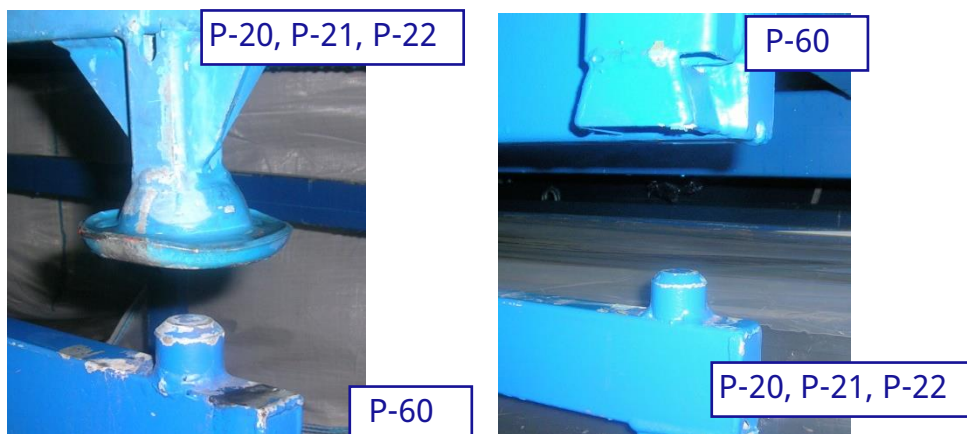
## Stacking

Technoform pallets are designed to be stacked both loaded or unladen. Peculiar attention needs to be paid while Stacking P-60 pallets both in case of combination between with P-60 only and with other pallet types P-20, P-21 o P-22.

In details:

### **Stacking pallet type P-60 with pallet P-20, P-21 e P-22.**

When stacking pallets the linchpins on the upper beam of the pallet (P-60) have to fit perfectly the foothold (Pallet P-20, P-21, P-22) (see Picture) or the hole in the lower beam (Pallet Type P60).



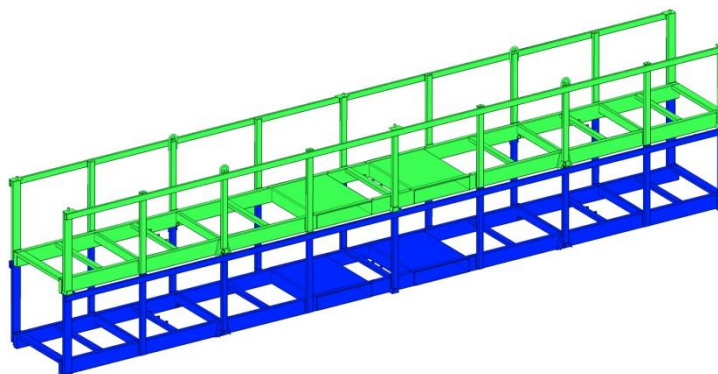
5 Pallet P60 with Pallet P-20, P-21;P-22

## Stacking pallet P-60 with pallet P-60

When stacking pallets the linchpins on the upper beam of the pallet have to fit perfectly the hole in the lower beam.

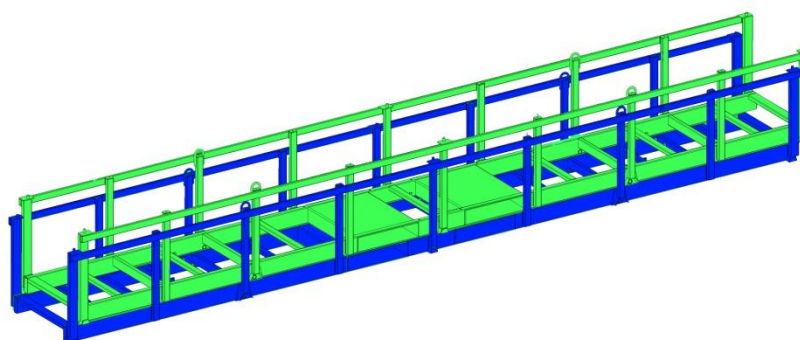


6 Stacking Pallet P-60



## Stacking Pallet Type P60 empty:

Empty pallet Type P60 can be stacked according to the previous information or in the way to reduce space, as shown in the picture below.



Thanks to this specific stacking procedure of pallet type P60, it is possible to reduce footprint: on the same area of 3 pallets stacked by the standard procedure, we can be able to stack up to 21 pallets according to the scheme shown in the picture below.



## Maximum stack load

The permissible stack load (defined as the total sum of the gross weight of the pallets) changes according to the type of pallets that are stacked:

### **Stack with pallet type P-60 only:**

Permissible stack load is 11.616 kg, which corresponds to no. 6 P-60 pallets fully loaded.

### **Stack of different pallet types:**

Permissible stack load is 6.000 kg.

In any case, pallets must be piled up in a way that the heaviest pallet is placed at the bottom while the lightest pallet is located on the top of the stack.

## Maximum stack height

The maximum permissible stack height for Technoform pallets depends on the pallet types to be stacked. In case of a stack of only P-60 pallets, up to 6 pallets are permitted. In case of different pallet types the maximum height corresponds to no. 5 pallet. It is mandatory to observe always and strictly the maximum permissible stack load.

## Identification

Technoform pallets are labelled with the following information:

Technoform – number – maximum load – pallet tare – maximum stack height (no. of pallets permitted) – year of construction

## Special load condition

Is it possible to load Technoform pallets with products longer than the pallet itself, provided that they do not exceed the maximum weight.  
In this case the load must hang equally out of both sides.  
Excessive overhang could damage the loaded goods.



## HANDLING

### Lifting by crane

It is not possible to lift any type of Technoform pallet by crane.  
The slots on the pallets have been designed for exclusive internal movement, and must not be used to hook up any lifting tool.

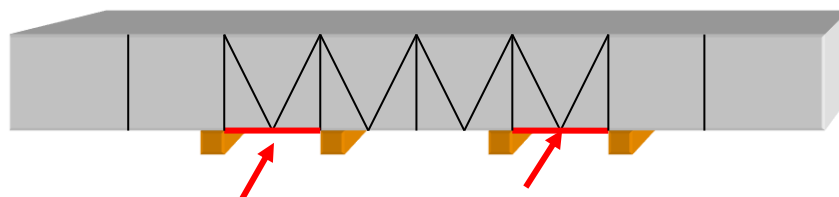
### Forklift handling

#### **Pallet P-20, P-21; P-22**

#### **CAUTION**

- ❑ Pallet Technoform P-20 has to be handled by using the eyelets below the lower beam.
- ❑ Pallet Technoform P-21 e P-22 has to be handled with the forks placed between the marked blocks, as shown in the picture below.
- ❑ The lifting capacity of the forklift has to be observed strictly
- ❑ Handling instructions has to be strictly observed

For Technoform pallet P-20, the distance between handling eyelets is 2330 mm.



Fork Position



### ***Lifting 1 pallets:***

It's permitted to lift one Technoform pallet P-20, P-21 e P-22 fully loaded.

### ***Lifting 2 pallets:***

#### Pallet Technoform P-20

It is allowed to lift two Technoform stillages P-20 only if the net weight of each pallet corresponds to the 50% of the maximum admissible load (750 kg).

#### Pallet Technoform P-21 e P-22

It is permitted to lift two Technoform pallet P-21 e P-22 fully loaded.

### ***Lifting 3 pallets:***

#### Pallet Technoform P-20

It is permitted to lift two Technoform stillages P-20 only if the net weight of each pallet corresponds to the 30% of the maximum admissible load (500 kg)

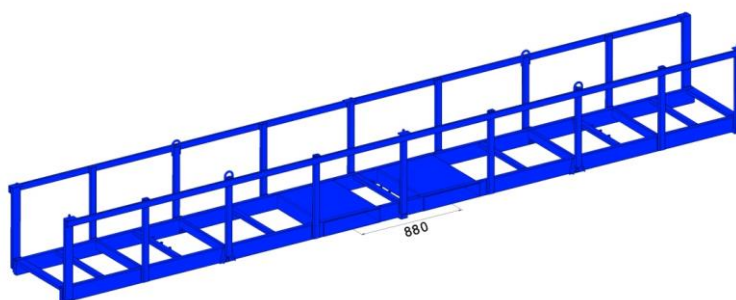
#### Pallet Technoform P-21 e P-22

It is permitted to lift two Technoform pallets P-21 e P-22 fully loaded.

## Pallet P-60

### CAUTION

- ❑ Technoform Pallet P60 has to be handled with by using the eyelets below the lower beam.
- ❑ The lifting capacity of the forklift has to be observed strictly.
- ❑ Handling instructions have to be strictly observed.



The distance between handling eyelets is 880 mm. Eyelet width is 500mm.

It is possible to lift up to maximum no. 3 fully-loaded pallets. In case of partially-loaded pallets, lift the stillages placing the heavier pallet on the bottom of the stack, and the lighter on the top.

P-60 pallet type can be lifted with the forks under the beam only when it is empty and only in case of stacking.



## Instructions (for use)



Stillages should always be laid down gently.

Stillages must be loaded by avoiding contents from slipping down.

Always store the stillages so that the stacks are upright and stable.

Always observe strictly the maximum permissible load-bearing capacity of the storage area.

Never lift stillages over people.

Never set down the stillages on inclined surfaces.

Always observe strictly the centre of gravity when lifting the stillages.

Never lift the stillages with faulty forklifts, cranes, or lifting accessories.

Always store the stillages so that heavier pallet is placed on the bottom and the lighter on the top of the stack.



Always bear in mind the weight distribution on the pallet during handling operations.

Never use defective stillages, which may be a potential hazard. they can't block access routes.

These stillages must be decommissioned and properly repaired immediately. Always mark the defective area clearly and inform Technoform of the fault.

Always inspect the stillages for safety before use.